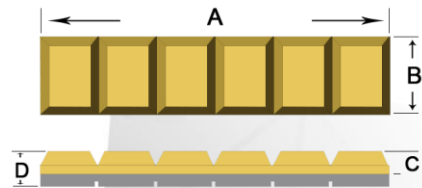
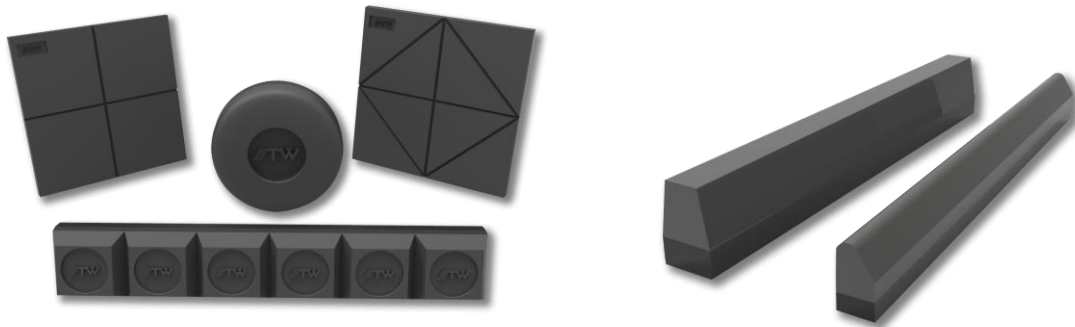




White Iron Product

- High chrome cast alloy vacuum brazed onto weldable mild steel
- Hardness HRC 63/HB 700
- Geat wear protection to your assets
- Standard shape or customized design

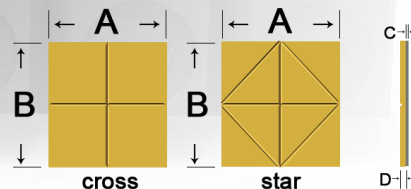
C	Cr	Mn	Mo	Cu	Si	P	S	Others
2.5-3.5	15-18	0.5-1.0	0.5-2.5	0.5-1.0	0.5-1.0	0.02max	0.02max	0.1-0.5



Chocky Bar

Part Number	Size (mm)	Dimension (mm)				N.W.(KG)
		A	B	C	D	
CB25	240x25x23	240	25	15	23	0.9
CB40	240x40x23	240	40	15	23	1.5
CB50	240x50x23	240	50	15	23	1.9
CB65	240x65x23	240	65	15	23	2.5
CB80	240x80x23	240	80	15	23	3.2
CB90	240x90x23	240	90	15	23	3.5
CB100	240x100x23	240	100	15	23	3.9
CB130	240x130x23	240	130	15	23	5.4
CB150	240x150x23	240	150	15	23	6.0

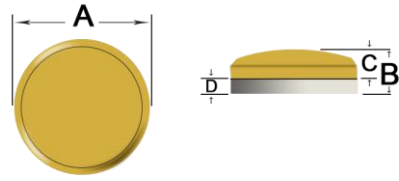
Notch Wear Plates



Part Number	Size (mm)	Dimension (mm)				N.W.(KG)
		A	B	C	D	
WPS 400	400x400x23	400	400	15	8	28.7
WPC 200	200x200x12	200	200	6	6	3.8
WPC 300	300x300x12	300	300	6	6	8.5

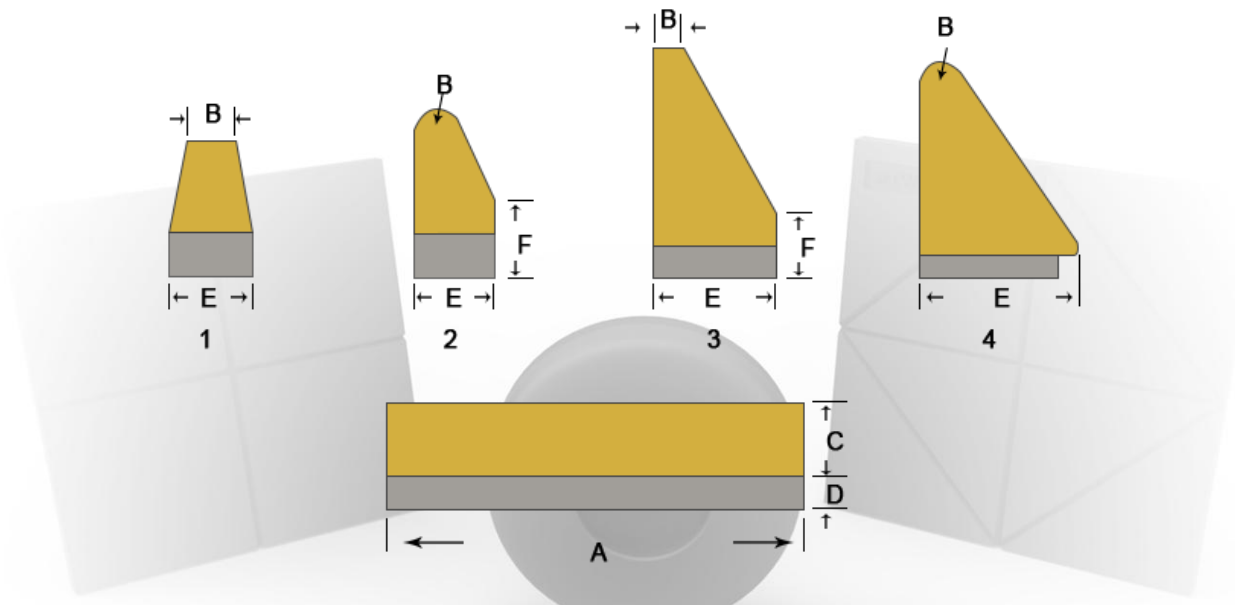


Wear Buttons



Part Number	Size (mm)	Dimension (mm)				N.W.(KG)
		A	B	C	D	
WB60	Φ60x27	60	27	17	10	0.7
WB75	Φ75x27	75	27	17	10	0.8
WB90	Φ90x27	90	27	17	10	1.4
WB110	Φ110x32	110	32	20	12	2.1
WB115	Φ115x32	115	32	20	12	2.5
WB150	Φ150x41	150	41	25	16	5.7

Shaped Wear Bars



Part Number	Size (mm)	Dimension (mm)						N.W.(KG)
		A	B	C	D	E	F	
SWB 200-1	200x13x30	200	13	20	10	20	-	0.8
SWB 244-1	244x10x35	244	10	25	10	25	-	1.3
SWB 202-1	202x10x35	202	10	25	10	25	-	1.1
SWB 275-2	275x5x29	275	5	21	8	16	16	0.9
SWB 200-3	200x25x59	200	3	47	12	25	-	1.5
SWB 400-3	400x25x59	400	3	47	12	25	-	2.9
SWB 200-4	200x25x50	200	10	38	12	25	-	1.5
SWB 400-4	400x25x50	400	10	38	12	25	-	2.9